

Catalogue

KBK FLEXIBLE CRANE SYSTEM



UP TO NOW, WE EXPORT MORE THAN **50** COUNTRIES

HEHAN ZOKE CRANE CO., LTD

EMAIL: sales@zokecrane.com

TEL: +86 373-3872-232

FAX: +86 373-5259-699

WEB: www.zoke-crane.com

www.zokecrane.com

ADDRESS: Changnao Industrial District, Xinxiang, Henan China

HEHAN ZOKE CRANE CO., LTD

www.zokecrane.com

ABOUT ZOKECRANE

Quality Is Our Top Priority

ZOKE CRANE is ISO9001-2008 registered. This means we actively monitor every part of our business, conducting monthly evaluations that cover everything from customer service to delivery times.

Technical Innovation Is Our Development Concept

ZOKE CRANE has been constantly carrying out technological innovation for many years, communicating and cooperating with internationally renowned enterprises, actively introducing high-tech, and pushing the ZOKE brand to the international market. Develop new products to meet the market demand for high-end products, market-oriented, based on integrity, take the road of technological innovation.

Service Is The Basis Of Our Survival

It is our aim to improve the production efficiency of customers. Customized and OEM accepted We provide professional consultant, sales, design, production, installation and commissioning, maintenance for customers worldwide.



CONTENT

关于KBK About KBK	01
KBK单梁悬挂起重机..... KBK Single Beam Suspension Crane	05
KBK-D双梁起重机 Double Beam KBK Crane	07
KBK单轨悬挂起重机..... KBK Monorail Suspension Crane	09
KBK铝合金轨道悬挂起重机..... KBK Aluminum Alloy Track Suspension Crane	10
KLS悬伸起重机 KLS Overhanging Crane	12
KLS伸缩梁起重机 KLS Telescopic Beam Crane	13
KBK-C系列刚性自立式起重机 KBK-C Series Rigid Self-erecting Crane	15
刚性轨道系统——悬挂式起重机 Rigid Track System-suspended Crane	19
案例展示 Cases Show	21



关于KBK About KBK

KBK柔性起重机系统应用模块化设计代替传统的整机设计概念，将起重机功能上基本相同的部件制成具有多种用途，有相同联接要素和可互换的标准模块。使起重机设计更加轻巧，装配更加方便，使用更符合人体工学，革命性提高了工作效率，为工业领域提供了性价比更高的选择。它广泛应用于：汽车工业，造船工业，食品加工，机械制造，仓库等各行业，覆盖从生产加工，装配到维修服务以及仓库等各类物料起吊搬运的场合，特别适用于设备稠密，短距离吊运，作业频繁的生产线上使用。

The KBK flexible crane system uses modular design instead of the traditional machine design concept, and makes the basically the same functional components of the crane have multiple uses, with the same connection elements and interchangeable standard modules. The design of crane is more lighter, assembly more convenient, use more ergonomic, the work efficiency is revolutionary, and the cost-effective choice is provided for the industrial field. It is widely used in automotive industry, shipbuilding industry, food processing, machinery manufacturing, warehouses and other industries, covering production and processing, assembly to maintenance services and warehouses and other materials lifting and handling occasions, especially suitable for dense equipment, short distance Lifting and frequent operations.

主要材料

Main Material of KBK

1. 型轨及附件：高强度钢Q235/Q345。
 2. 标准组件：合理使用新材料和轻质材料，如高强度钢，塑料，尼龙，铝合金等。
 3. 表面涂装：KBK 轨道表面，先抛丸处理，再经过防腐处理，处理后再喷防腐油漆/塑粉涂料。
1. **Rail and accessories:** high-strength steel Q235 / Q345
 2. **Standard components:** reasonable use of new materials and lightweight materials, such as high-strength steel, plastic, nylon, aluminum alloy, etc.
 3. **Surface coating:** KBK track surface firstly shall be shot blasting treatment, secondly anti-corrosion treatment, then spray anti-corrosion paint / plastic powder coating.



KBK 型起重机VS 传统起重机 (优势)

KBK crane VS traditional crane (advantage)

降低厂房造价: 设备不需要借助厂房牛腿, 在厂房前期设计阶段, 即可大限度的降低厂房立柱承载设计, 大幅度的减少厂房造价。

厂房无需改变: 针对已有的车间, 可随时根据生产需要, 进行添加, 不需对厂房结构进行任何改造。

设备闲置少: 可根据实际需要覆盖的搬运空间, 进行增减, 拆装搬迁轻松快捷, 不影响其他区域起重机正常使用。

模块化设计: 可根据不断变化的生产需要, 进行增减, 拆装搬迁轻松快捷, 不影响其他区域起重机正常使用。

更精准定位: 结构轻小、操作方便、定位精准。

更节能环保: 功率小、能耗低、节能环保。

运行噪音极低: 结构简介、故障率低、极大程度减少设备故障带。

综合效益高: 轨道系统免维护、电气部件维护方便、且成本低, 减少设备故障造成的时间和人工花费, 综合效率高。

Reduce Plant Cost: The equipment does not need to rely on the bracket of the plant. In the early design stage of the plant, it can greatly reduce the bearing design of the plant column and the plant cost.

No Need Change The Existing Plant: for the existing plant, it can be added at any time according to the production needs without any modification of the plant structure.

Less Idle Equipment : It can be increased or decreased according to the actual need to cover the transportation space, dis-assembly and relocation is easy and fast, and does not affect the normal use of cranes in other areas.

Modular Design: It can be increased or decreased according to actually production needs, dis-assembly and relocation are quick and easy, without affecting the normal use of cranes in other areas.

More Precise Positioning: light and small structure, convenient operation and accurate positioning.

More Energy-saving And Environmental Protection: low power, low energy consumption, energy saving and environmental protection.

Very Low Operating Noise: a brief introduction to the structure and a low failure rate, greatly reducing equipment failure zones.

High Comprehensive Benefit: The track system is maintenance-free, the maintenance of electrical components is convenient, and the cost is low. The time and labor costs caused by equipment failure are reduced, and the overall efficiency is high.

KBK 型起重机VS 其他悬挂起重机 (优势)

KBK crane VS other suspended cranes, such as I-beam crane (advantage)

轨道强度高: 高强度钢制轨道, 冷轧成型, 不变形

封闭C 型及Ω 型设计: 可以有效避免灰尘进入, 从而减小小车车轮磨损, 延长使用寿命。

2° 斜面设计: 可有效保证小车处于轨道中心, 最大限度的减小滑动阻力。

起重能力大: 最大可负载5000kg 及以上重量。

吊点间距大: 特殊轨道结构设计, 最大可间隔9米悬挂吊点, 大幅度减少立柱数量降低对工作空间的干涉, 使厂房布置更加美观。

High Track Strength: high-strength steel track, cold rolled, without deformation

Closed C-type And Ω-type Design: It can effectively prevent dust from entering, thereby reducing trolley wheel wear and prolonging service life.

2 ° Slope Design: it can effectively ensure that the trolley is in the center of the track and minimize the sliding resistance.

Big Lifting Capacity: the maximum load is 5000kg and above.

Large Hanging Point Spacing: special track structure design, the maximum hanging point can be suspended at 9 meters, greatly reducing the number of columns and interference in the working space, making the plant layout more beautiful.



KBK 单梁悬挂起重机

KBK Single Beam Suspension Crane



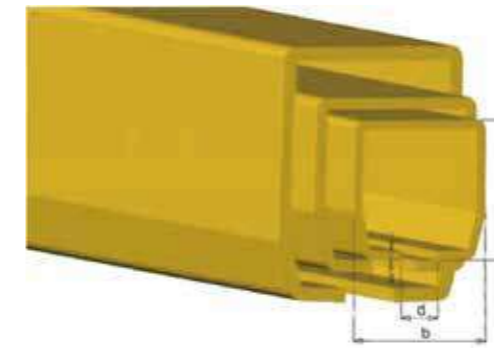
简介 A Brief Introduction

KBK 单梁悬挂起重机，是利用标准直线段轨道和其他辅助标准部件组合而成，主梁两端的小车行走部分，可在与主梁方向垂直的两条平行吊挂KBK 轨道中运行。单梁与PK型环链葫芦配套使用，环链葫芦运行小车沿着主梁方向运行。该产品应用于平面物料输送，适用于车间，仓库等场地。KBK 单梁悬挂起重机由于有特殊的柔韧性和自由度，它可以倾斜于运行轨道行走，也可以在变跨度轨道中运行。起重机梁盒行走机构之间的连接采用万向球接头，这样起重机不会出现夹紧现象，并能毫无阻碍的通过轨道的楔形地段和突出部分。

KBK single-beam suspension crane is composed of standard straight-line track and other auxiliary standard components. The trolley traveling parts at both ends of the main beam can run in two parallel hanging KBK tracks perpendicular to the main beam direction. The single beam is used in conjunction with chain hoist, and the trolley of chain hoist runs along the direction of the main beam. This product is used for flat material transportation, suitable for workshops, warehouses and other venues. Because of its special flexibility and freedom, KBK single beam suspension crane can run on the running track or in the variable span track. Universal ball joint is used to connect the traveling mechanism of the crane beam box, so that the crane will not clamp, and can pass through the wedge section and protruding part of the track without any obstruction.

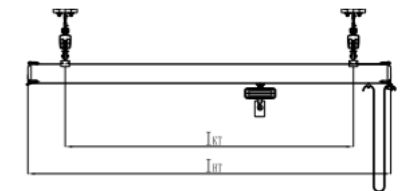
我们的三种尺寸规格的轨道能够适用于各种负载起重重量。ZOKECRANE轨道的斜面设计很好的确保了轨道内滑车的直线型并且减少了轨道内灰尘的积累，这样就确保了滑车能够在轨道内顺畅的运行，并且延长了轨道的使用寿命。

Our 3 sizes of rails can be applied to various loads. The slope design of the track ensures that the straightness of the trolley in the track and reduces the accumulation of dust in the track, which ensures that the trolley can run smoothly in the track and extend the life of the track.



KBK轨道型号 KBK rail Model	尺寸 Size			
	h (mm)	b (mm)	d (mm)	s (mm)
I	60	65	18	3.60
II	75	80	22	4.50
III	110	90	25	6.50

技术参数 Technical Data



KBK轨道型号 KBK rail Model		载荷Capacity(KG)						
		80	125	250	500	1000	2000	3200
I	起重机跨度LK Span-LK	4.4	3.8	1.8	/	/	/	/
	梁长L Beam length-L	5.0	4.0	2.0	/	/	/	/
II	起重机跨度LK Span-LK	/	/	7.7	5.7	2.7	/	/
	梁长L Beam length-L	/	/	8.0	6.0	3.0	/	/
III	起重机跨度LK Span-LK	/	/	10.5	9.2	6.6	4.0	3.4
	梁长L Beam length-L	/	/	13.0	11.0	8.0	5.0	4.0

KBK-D 双梁起重机

Double Beam KBK Crane



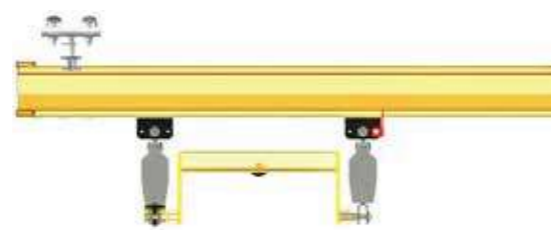
简介 A Brief Introduction

KBK-D 双梁轨道拥有重型负载的能力，广泛适用于重物的起重。葫芦的位置在两根主梁截面之间，以确保提升空间最大的使用率。

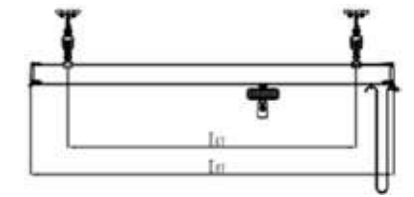
该产品用于平面物料输送，适用于车间，仓库等场地，常用于较大跨度和较重物料的吊运。

Double beam KBK track has the ability of heavy load, which is widely used in heavy lifting. The position of the hoist is between the two main beam sections to ensure the maximum utilization rate of the lifting space.

This product is used for flat material transportation, suitable for workshops, warehouses and other venues, and is commonly used for lifting large spans and heavy materials.



技术参数 Technical Data



KBK轨道型号 KBK rail Model		载荷Capacity(KG)					
		125	250	500	1000	2000	3200
I	起重机跨度LK Span-LK	5.1	4.0	2.8	/	/	/
	梁长L Beam length-L	7.0	5.0	3.0	/	/	/
II	起重机跨度LK Span-LK	/	10.0	8.1	5.9	3.7	/
	梁长L Beam length-L	/	12.0	10.0	8.0	4.0	/
III	起重机跨度LK Span-LK	/	10.5	10.5	9.3	6.7	5.2
	梁长L Beam length-L	/	14.0	14.0	12.0	7.0	7.0

产品案例 Product Cases



KBK 单轨悬挂起重机

KBK Monorail Suspension Crane



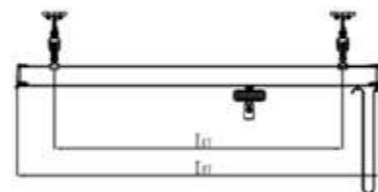
简介 A Brief Introduction

KBK 单轨悬挂起重机适用于物料的线性输送，它可以把装料工位和卸料工位直接连接起来，适用于往返输送作业或者环形输送作业。KBK 单轨道的走向布置灵活，从简单的，手动控制的直线轨道的大量分支的、半自动和全自动控制的环形轨道等不同轨道的任意走向。KBK单轨输送线可全线供电，每个运行小车都可自行驱动，可实现物料的双向输送。

The KBK monorail suspension crane is suitable for the linear transport of materials. It can directly connect the loading station and the unloading station. It is suitable for round-trip transportation operations or circular transportation operations. KBK monorail track is flexible in layout, manually controlled linear tracks with a large number of branched, semi-automatic and fully-automatic controlled circular tracks and other arbitrary directions. The KBK monorail conveyor line can be powered by the whole line, and each running trolley can be driven by itself, which can realize the two-way transportation of materials.

技术参数 Technical Data

KBK轨道型号 KBK rail Model	载荷Capacity(KG)				
	250	500	1000	2000	3200
I	2.6	/	/	/	/
II	8.0	5.7	3.2	/	/
III	/	/	/	3.7	3.0



高度-可定制
Height can be customized
L-单轨最大悬挂间距
Hanger Distance

KBK 铝合金轨道悬挂起重机

KBK Aluminum Alloy Track Suspension Crane



简介 A Brief Introduction

铝合金应用在当今许多的工业领域，越来越多的轻工业企业预采用更轻重量的产品以保证有更多的功能以及更高的安全和操作性能。

Aluminum alloys are used in many industrial fields. More and more light industrial enterprises adopt lighter and heavier products to ensure more functions, higher safety and operation performance.

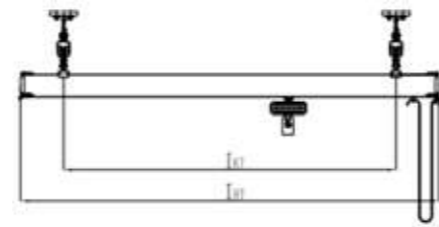
优势 Advantage

1. 铝合金单梁悬挂起重机适用于较小的负载和较小的跨度。
2. 铝合金单梁悬挂起重机适用于较大的负载和较大的跨度。
3. 易拆卸组装，免维护系统
4. 自重低，设计紧凑
5. 易于集成，灵活扩展
6. 采用阳极氧化铝表面的司机

1. Aluminum alloy single beam suspension crane is suitable for smaller loads and smaller spans.
2. Aluminum alloy single beam suspension crane is suitable for larger load and larger span.
3. Easy disassembly and assembly, maintenance-free system
4. Low weight and compact design
5. Easy integration and flexible expansion
6. Driver with anodized aluminum surface

KBK 铝合金单梁悬挂起重机-技术参数

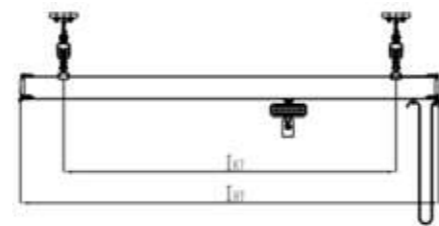
Aluminum Alloy Single Beam Suspension Crane-Technical Data



KBK轨道型号 KBK rail Model	参数 Parameter	载荷Capacity(KG)					
		80	125	250	500	1000	2000
A160	起重机跨度LK Span-LK	4.4	3.9	2.9	/	/	/
	梁长L Beam length-L	5.0	4.0	3.0	/	/	/
A180	起重机跨度LK Span-LK	7.9	7.9	6.3	4.5	2.9	/
	梁长L Beam length-L	8.0	8.0	7.0	5.0	5.0	/
A220	起重机跨度LK Span-LK	/	/	/	5.5	5.5	2.0
	梁长L Beam length-L	/	/	/	6.0	6.0	2.4

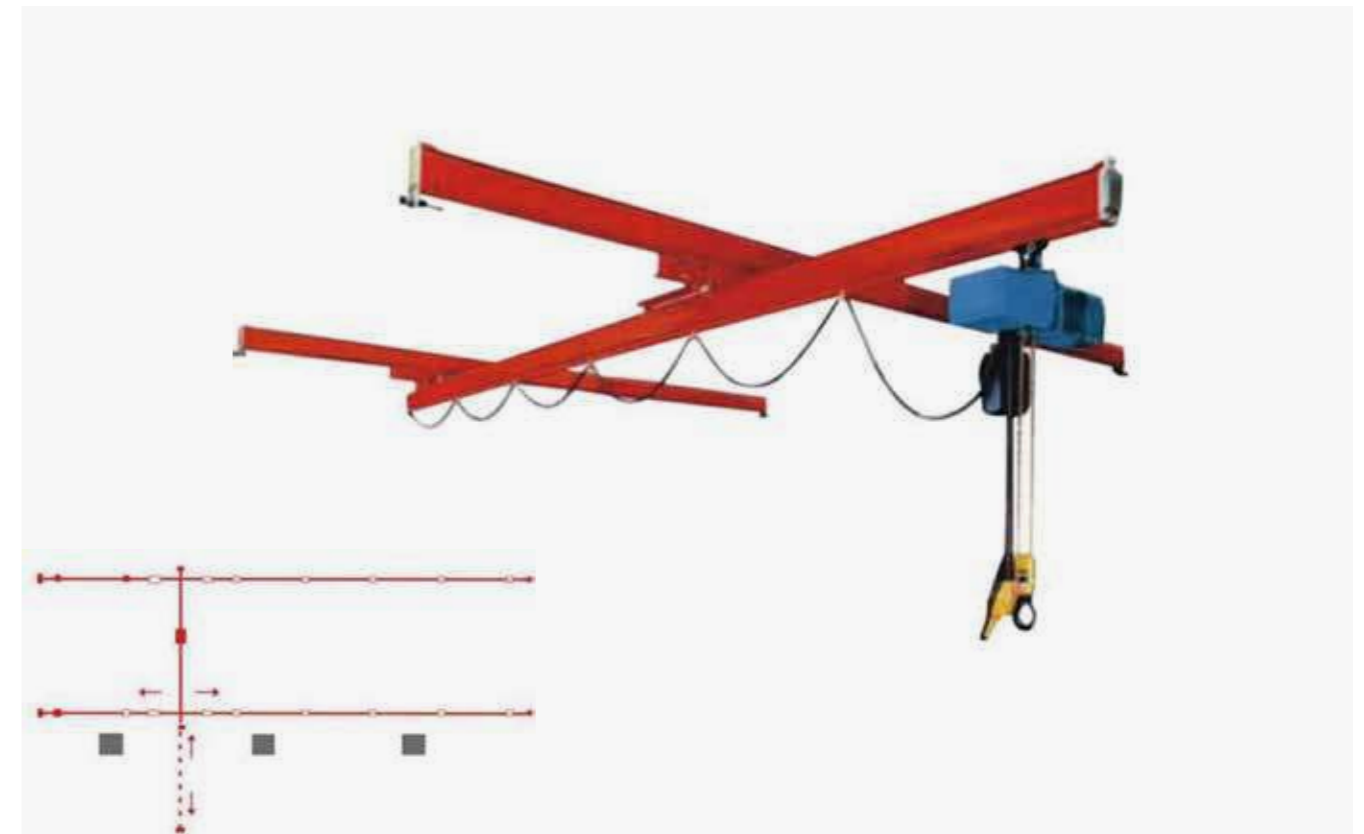
KBK 铝合金双梁悬挂起重机-技术参数

Aluminum Alloy Double Beam Suspension Crane-Technical Data



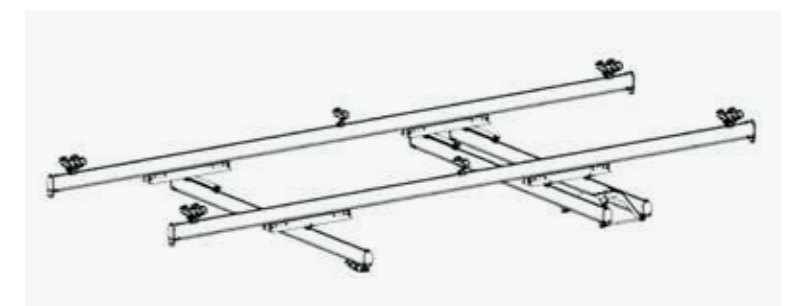
KBK轨道型号 KBK rail Model	参数 Parameter	载荷Capacity(KG)				
		125	250	500	1000	2000
A160	起重机跨度LK Span-LK	4.2	4.2	4.2	/	/
	梁长L Beam length-L	5.0	5.0	5.0	/	/
A180	起重机跨度LK Span-LK	7.9	7.9	7.9	4.6	4.6
	梁长L Beam length-L	8.0	8.0	8.0	5.0	5.0

KLS 悬伸起重机
KLS Overhanging Crane



简介 A Brief Introduction

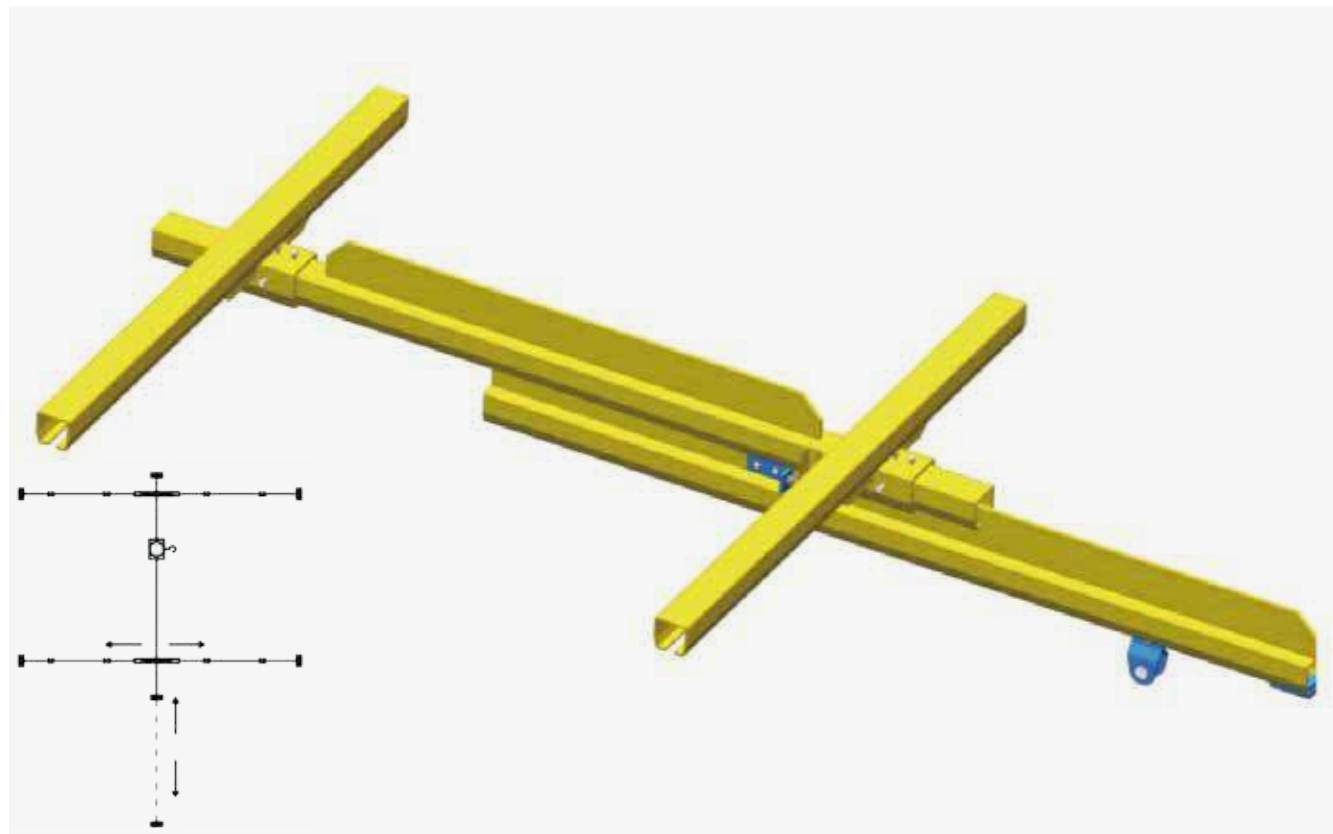
悬伸梁起重机可延伸轨道跨距，通过中间梁向一边或两边延伸，最长可至2.5米，当您增加起重机的服务区域，绕开障碍或者搬运物体至较难到达的区域时，这一设计将是最理想的方案。该产品在单梁运行过程中能伸出工作梁在原工作区之外吊运货物，特别是在有遮挡物时能增加辅助作业范围，让物件或设备能够充分利用其使用空间。



The suspension beam crane can extend the rail span and extend to one or both sides through the middle beam, up to 2.5 meters. When you want to increase the crane's service area, bypass obstacles or move objects to the more difficult area, this design will be the best solution. The product can extend the working beam to lift goods outside the original work area during the operation of the single beam, especially when there is an obstruction, the auxiliary working range can be increased, so that the object or equipment can make full use of its use space.

KLS 伸缩梁起重机

KLS Telescopic Beam Crane



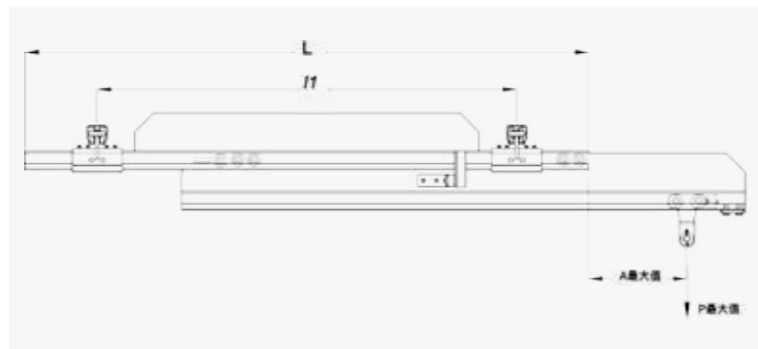
简介 A Brief Introduction

KLS 伸缩梁起重机就是在起重机主梁之间或之下装有一个伸缩梁。根据设计不同，它可以一边或两边伸出轨道之外，伸缩梁起重机可以对很难接触到的区域，例如立柱之间对物体进行吊运和定位。

根据所要求的扩展宽度，伸缩梁起重机可以由KBK防翘导论组部件来实现。

KLS telescopic beam crane is equipped with a telescopic beam between or under the crane main beam. Depending on the design, it can extend out of the track from one or both sides, and the telescopic beam cranes can lift and position objects that are difficult to reach, such as between columns.

According to the required expansion width, the telescopic beam crane can be realized by KBK anti-warping introductory group components.



组件产品图

Modular System



KBK轨道
KBK Rail



KBK手动小车
Manual Trolley of KBK



KBK吊夹
KBK Suspension Clamp



KBK铝合金导向轮
Aluminium Alloy Guide Wheel



欧式小车
European Trolley



KBKI型电缆滑块
Cable Slider Of KBK I Model Rail



员线夹
Cable Clip



KBKII型电缆滑块
Cable Slider Of KBK II Model Rail



吊挂装置
Travel Beam Hangers



小车横梁
Trolley Cross Beam



中间挡块
Middle Block

KBK-C系列刚性自立式起重机

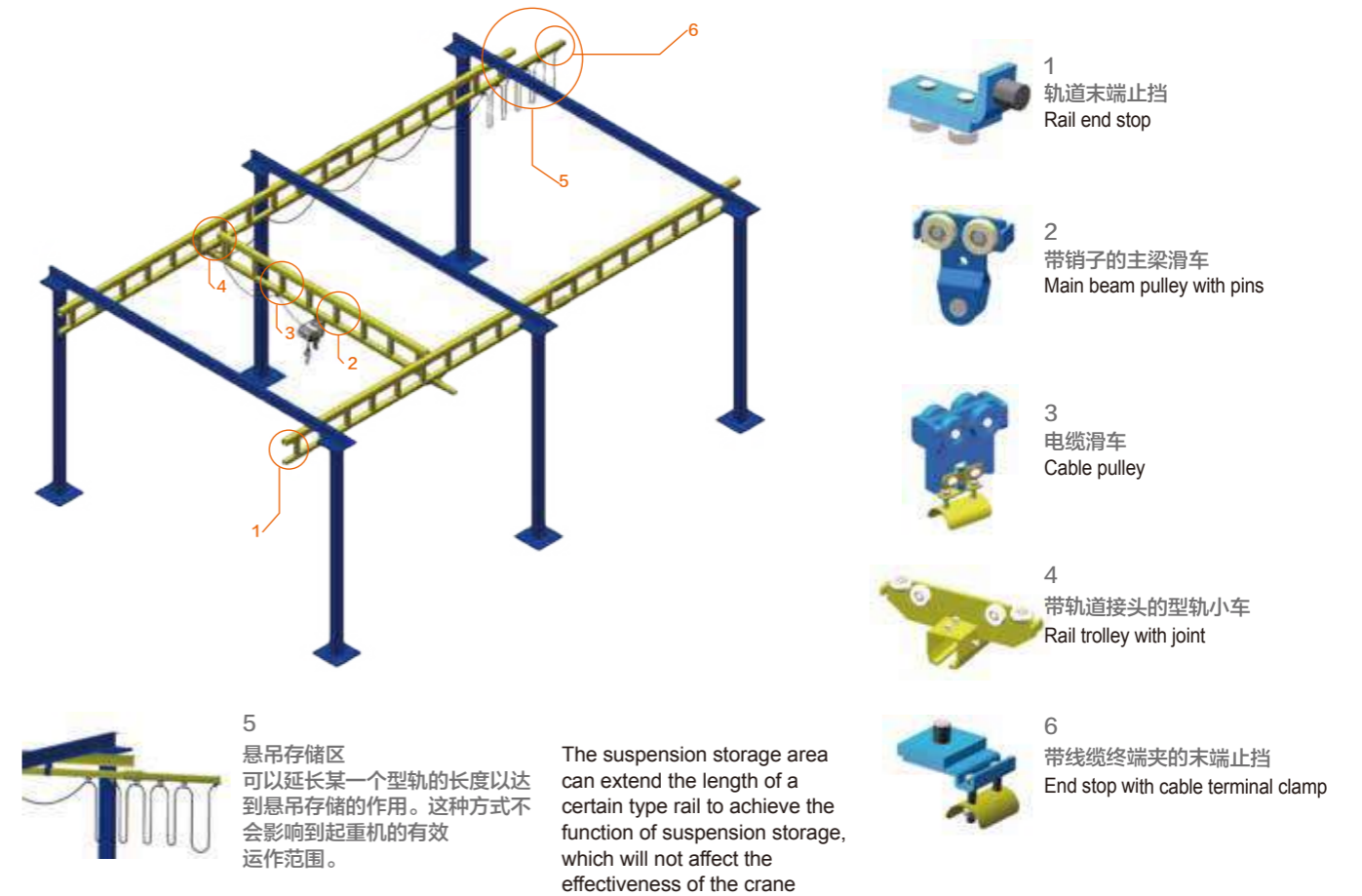
KBK-C Series Rigid Self-erecting Crane



简介 A Brief Introduction

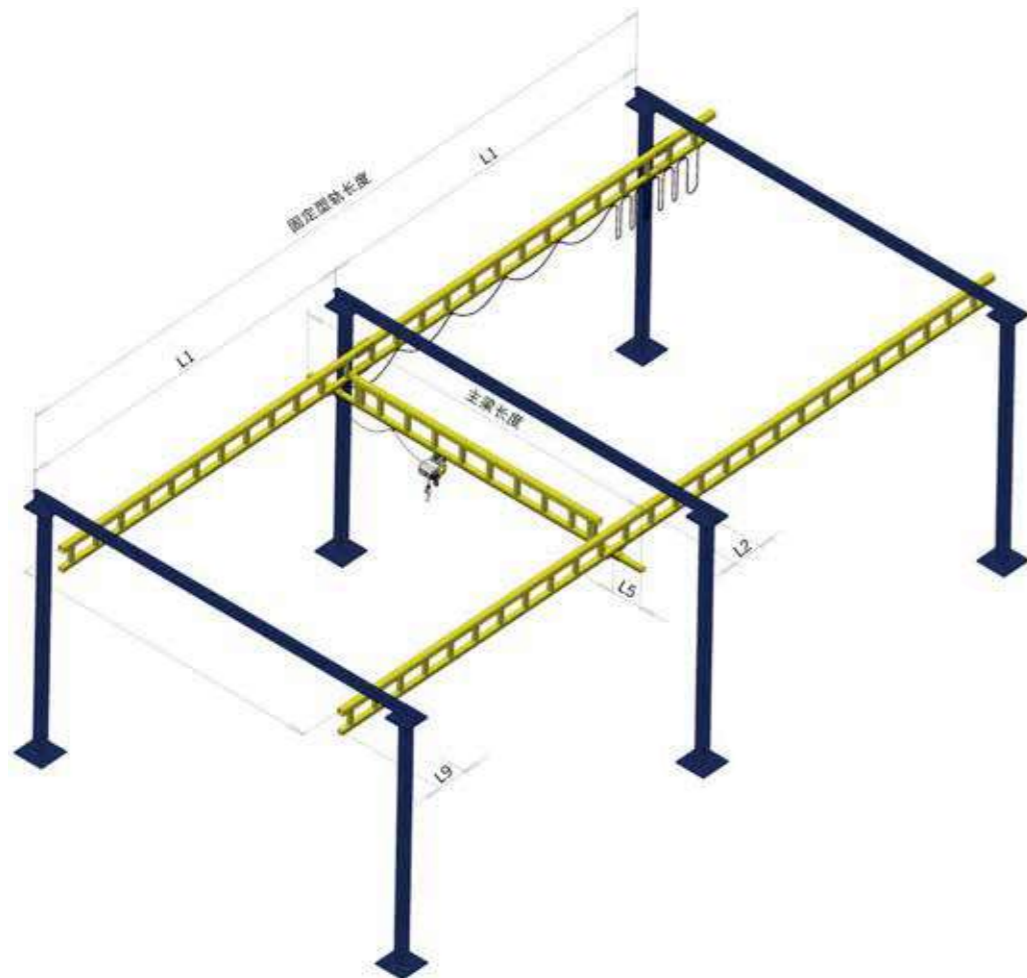
KBK-C刚性组合式起重机系统应用模块化设计，将不同型号的部件制成具有多种用途，有相同联接要素和可互换的标准模块。刚性与柔性的设计形式的区别在于KBK-C型组合式起重机的行轨及主梁是刚性的。

KBK-C rigid modular crane system adopts modular design, making different types of components with multiple uses, with the same connection elements and interchangeable standard modules. The difference between rigid and flexible design forms is that the rail and main beam of KBK-C combined crane are rigid.



产品优势 Product Advantages

- | | |
|--|--|
| <ul style="list-style-type: none"> • 最大负载2000公斤 • 跨度最大可达10米 • 模块化的设计具有可扩展性 • 具有成本效益 • 采用各种支撑架便于安装 • 多样化安装方式 • 与将来的或者现有的悬挂输送系统具有连通性 • 伸缩臂式起重机 • 手动或电动运行 • 地面自立式或天花悬挂式起重机系统 • 产品部件可以镀金或镀银 | <ul style="list-style-type: none"> • Maximum load 2000 kg • The span can be up to 10 meters • Modular design with scalability • Cost-effective • Various supporting frames are used for easy installation • Various installation methods • Connectivity with future or existing suspension conveyor systems • Telescopic crane • Manual or electric operation • Floor self-standing or ceiling suspended crane system • Product parts can be gold-plated or silver-plated |
|--|--|



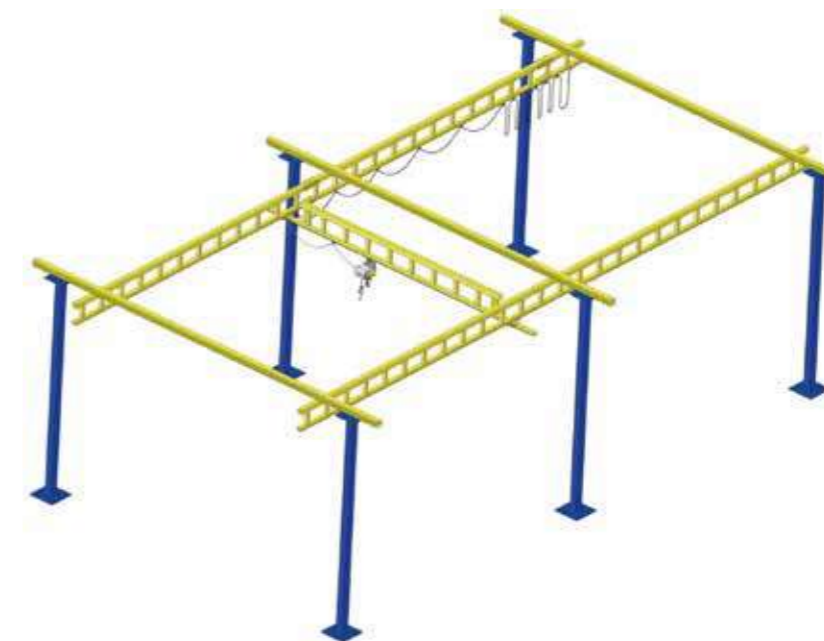
技术参数 Technical Data

额定载荷 KBK rail Model	轨道编号	L4最大值	L1最大值	主梁跨距 (mm) L2最大值	L5最大值	L9最大值
250	I-N	2500	1900	1200	600	1200
	I-H	10000	9000	1200	600	1200
500	II-N	2500	1800	1200	600	1200
	II-H	1000	9000	1200	600	1200
1000	III-N	3000	2000	1200	600	1200
	III-H	10000	9000	1200	600	1200
2000	III-H	9000	8000	1200	600	1200



自立式起重机主要应用于顶部无法进行吊装的情况下。通常情况下为了达到较大的跨距，主梁一般采用加强型轨道，而型轨通常采用普通轨道并直接固定在顶部相平行的工字钢上。

The self-erecting crane is mainly used when the top cannot be hoisted. Generally, in order to achieve a larger span, the main beam generally adopts a reinforced rail, and the rail is usually a normal rail and is directly fixed on the I-beam parallel to the top.



采用桁架式轨道可以增加支撑吊点间距，因此不需要安装型轨顶部相平的工字钢。这种情况下安装也简便了很多，节约了安装时间。

The use of truss-type rails can increase the distance between the supporting lifting points, so there is no need to install the I-beams on the top of the profile rails. In this case, installation is also much easier, saving installation time.

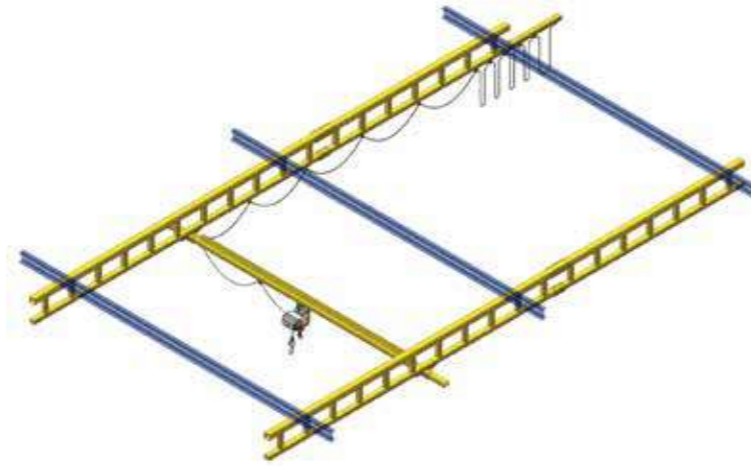
刚性轨道系统——悬挂式起重机

Rigid Track System-suspended Crane

采用普通轨道的悬挂式起重机

Suspension Crane Using Ordinary Track

悬挂式起重机主要应用于地面空间受限的情况下。由于起重机直接悬挂于顶部，地面上不需要立柱，因此地面工作区域可以用作其他用途。然而，悬挂式起重机需要合适的顶部支撑结构。当顶部吊点间距较小时，可以采用将普通型轨道直接吊装在工字钢下的方式。



Suspension cranes are mainly used when the ground space is limited.

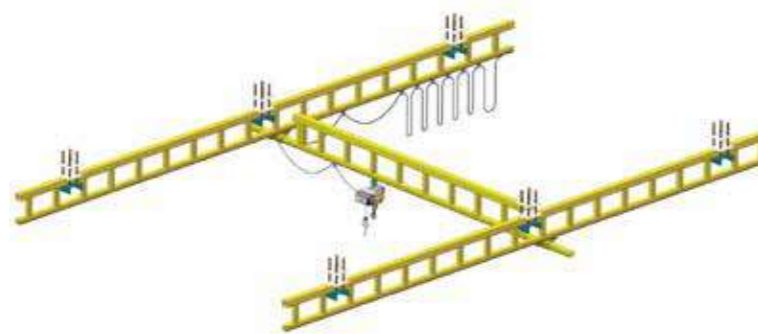
Since the crane is directly hung from the top, no columns are needed on the ground, so the ground working area can be used for other purposes. However, the overhead crane requires a suitable top support structure. When the distance between the top lifting points is small, the method of directly mounting the ordinary rails under the I-beam can be adopted.

采用桁架式轨道的悬挂式起重机

Suspension Cranes With Truss-type Rails

当顶部吊装钢结构受限时，可采用桁架式轨道以便减少吊点的数量。

Suspension cranes with truss-type rails: When the top-mounted steel structure is limited, truss-type rails can be used to reduce the number of lifting points.



多主梁起重机

Multi-girder crane

当需要多个操作人员在同一区域同时工作时，可以采用多主梁起重机。我们通常可以采用多种形式的缓冲区域防止起重机主梁之间相互干涉。通过这种方式也可以实现用小规格的型轨承载多个主梁。比如，用500公斤承载能力的型轨可以同时承载两组500公斤承载的主梁。为了防止型轨上的负载超载，我们需要采用缓冲区域保持主梁之间的间距。

When multiple operators are required to work simultaneously in the same area, a multi-girder crane can be used. We can usually use a variety of buffer areas to prevent the crane main beams from interfering with each other. In this way, it is also possible to carry multiple main beams with profile rails of small specifications. For example, a profile rail with a load capacity of 500 kg can simultaneously carry two sets of main beams with a load of 500 kg. In order to prevent the load on the profile rail from being overloaded, we need to use a buffer area to maintain the spacing between the main beams.

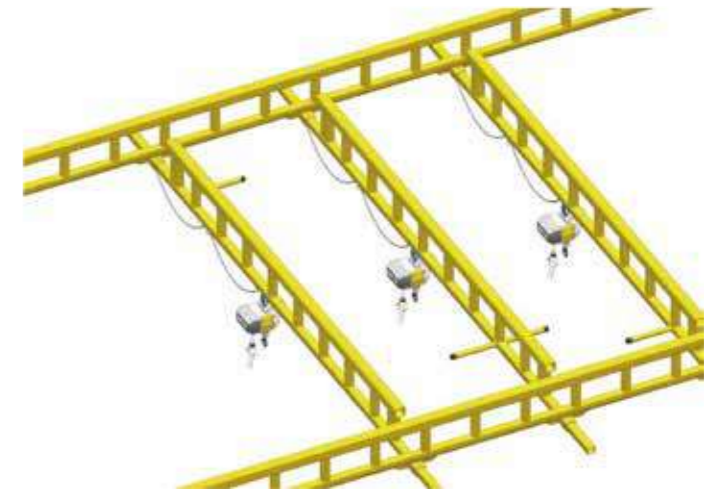
采用轨道末端止挡作为缓冲区域

Use The End Stop Of The Track As A Buffer Area



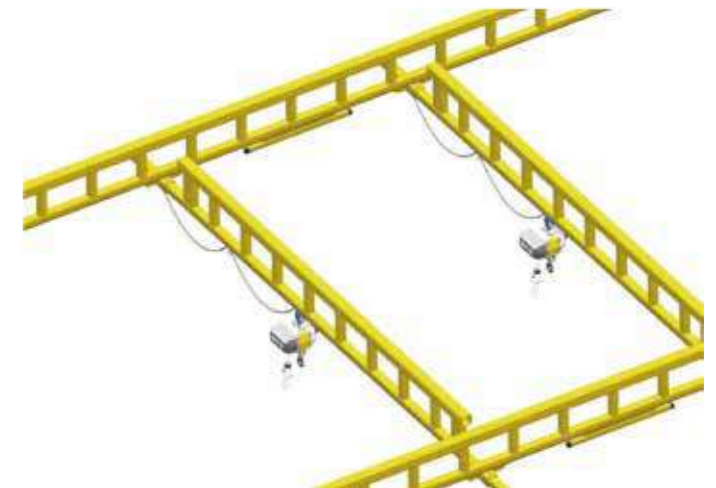
采用隔离杆作为缓冲区域

Use Isolation Rod As Buffer Area



采用隔离杆作为缓冲区域

Use Isolation Rod As Buffer Area



案例展示
Cases Show

